

Luminant

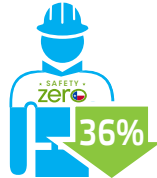
Five Years – By the Numbers

362,300,000 MWh of reliable electricity generated, enough to power the world for a week.



\$2.8 billion

in improvements invested in our existing plants and mines, including:



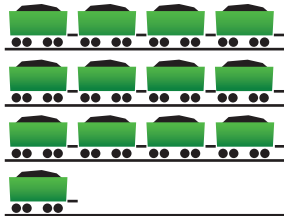
36 percent decrease in Luminant's total recordable injury rate, culminating in 2012 with a **0.80** incident rate – the company's safest year on record.



\$850 million

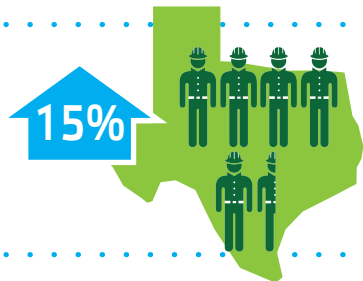
spent on environmental technology and other improvements to provide cleaner generation from our coal-fueled power plants. Those investments have resulted in a more than **20 percent** decrease in key emissions from a 2005 benchmark while increasing generation by **21 percent**.

137 million tons of lignite mined, roughly the same amount held by **1,308,033** railcars.



>98 percent capacity factor for nuclear generation, ranking

Comanche Peak Nuclear Power Plant as the **top nuclear generator** in the country according to American Nuclear Society magazine.



553 new jobs added in Texas, a **15 percent** increase in the number of our full-time employees, hired even in the midst of a recession.



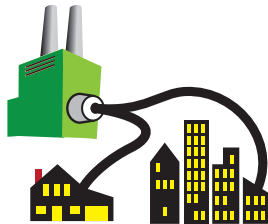
\$9.7 million

in employee and corporate charitable contributions, benefiting the communities in which our employees live and work.



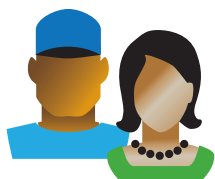
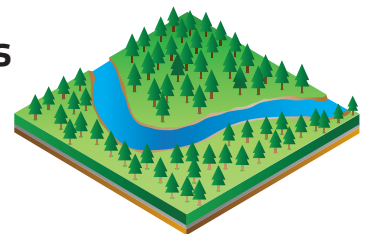
\$3.25 billion

investment completed for the creation of an additional **2,200** megawatts of reliable generation.



10,015 acres

of land reclaimed following mining, more than the size of Bastrop, Cedar Hill and Possum Kingdom state parks combined.



\$400 million

on goods and services with our valued certified minority- and women-owned business enterprises.

\$335 million

invested in opening new mines to supply much-needed fuel to meet the state's demand for electricity.



6.9 million

trees planted – side-by-side and fully grown, enough to circle the Earth twice.



Luminant