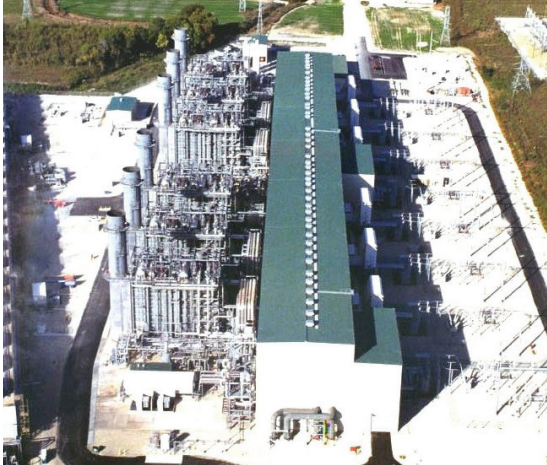


Power Plant



Basic Facts

Fuel source: Natural gas

Operating capacity and homes powered: 1,912-megawatt combined-cycle, natural gas-fired power plant, capable of powering 956,000 homes in normal conditions and about 382,000 homes in periods of peak demand.

Units and type: 6 GE 7FA gas turbines, 6 Aalborg HRSG² with duct firing, 2 Toshiba steam turbines.

Year began operation: 2003

Location: Kaufman County



Economic Impact

Luminant and its gas-fueled power plant employees are proud to be a major contributor to the communities in which our employees work and live.

Community Benefit

Our Forney Power Plant employees have a rich history in community leadership through employee outreach and financial support of worthwhile projects and community organizations. A few of these deserving groups include:

- Forney Lions Club
- Forney Chamber of Commerce
- Forney ISD Education Leadership Foundation

Awards and Recognition

Luminant's gas facilities are recognized as community and corporate leaders by a variety of regulatory, conservation, municipal and other organizations. A few of these awards and milestones include:

- Forney Power Plant is a Star site, the highest designation of OSHA's Voluntary Protection Programs. The achievement recognizes employers and workers who have implemented effective safety and health management systems and maintain injury and illness rates below national Bureau of Labor Statistics averages for their respective industries.

Environmental Responsibility

Luminant is proud of its strong track record of meeting or outperforming all environmental laws, rules and regulations. Burning natural gas for generating electricity results in few emissions. Luminant uses various environmental control technologies and combustion techniques to reduce emissions of nitrogen oxides below the required levels.